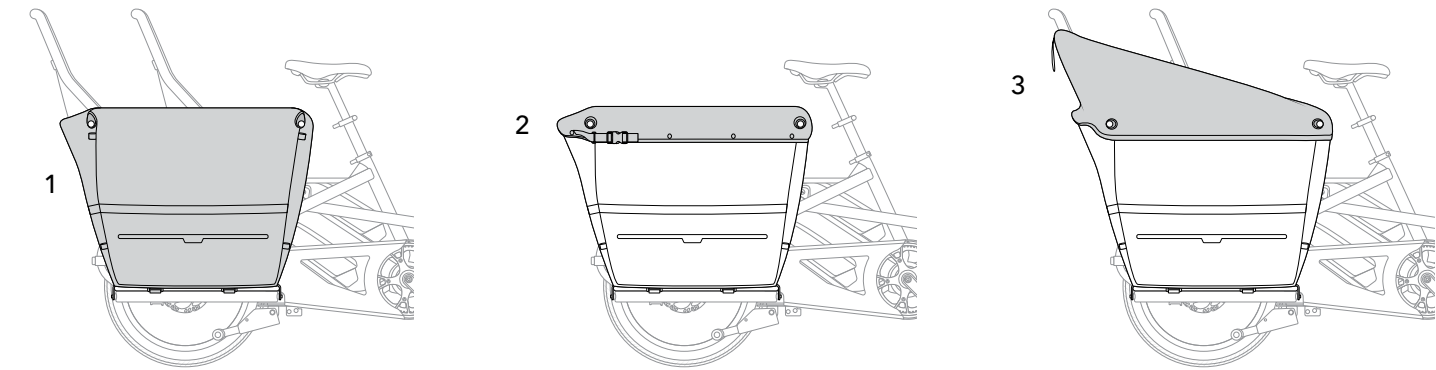


What’s Included

- 1. Storm Box™
- 2. Cargo Lid™
- 3. Kid Lid™



Carrying Rear Passengers

In order to safely transport rear passengers, please check the following points and ensure your bike is equipped with the proper accessories.

Check Local Regulations

⚠ It may be illegal to carry passengers on a bike in your area even if it has been designed or configured to do so. Check your local regulations before carrying passengers.

Wear a Helmet

Rider and rear passenger(s) are strongly advised to wear an approved helmet.

Do NOT Leave Children Unattended

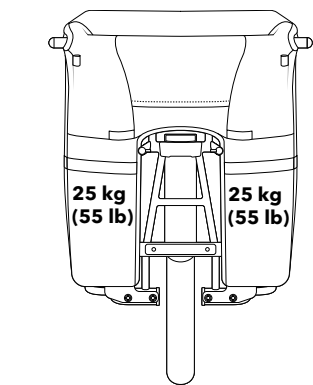
Do not allow your children to climb onto the bike nor leave your children unattended on the bike, even if it is on the kickstand. Wriggling children can upset the balance of the bike and a fall may result in serious injuries.

Check Max Gross Vehicle Weight Limits

⚠ Maximum gross vehicle weight is the total weight of the bike, rider, passenger(s), accessories, and cargo. Please follow and check the GSD manual for information about maximum gross vehicle weight. Most riders can comfortably carry 80% of their weight. You should determine if you are comfortable carrying that much weight.



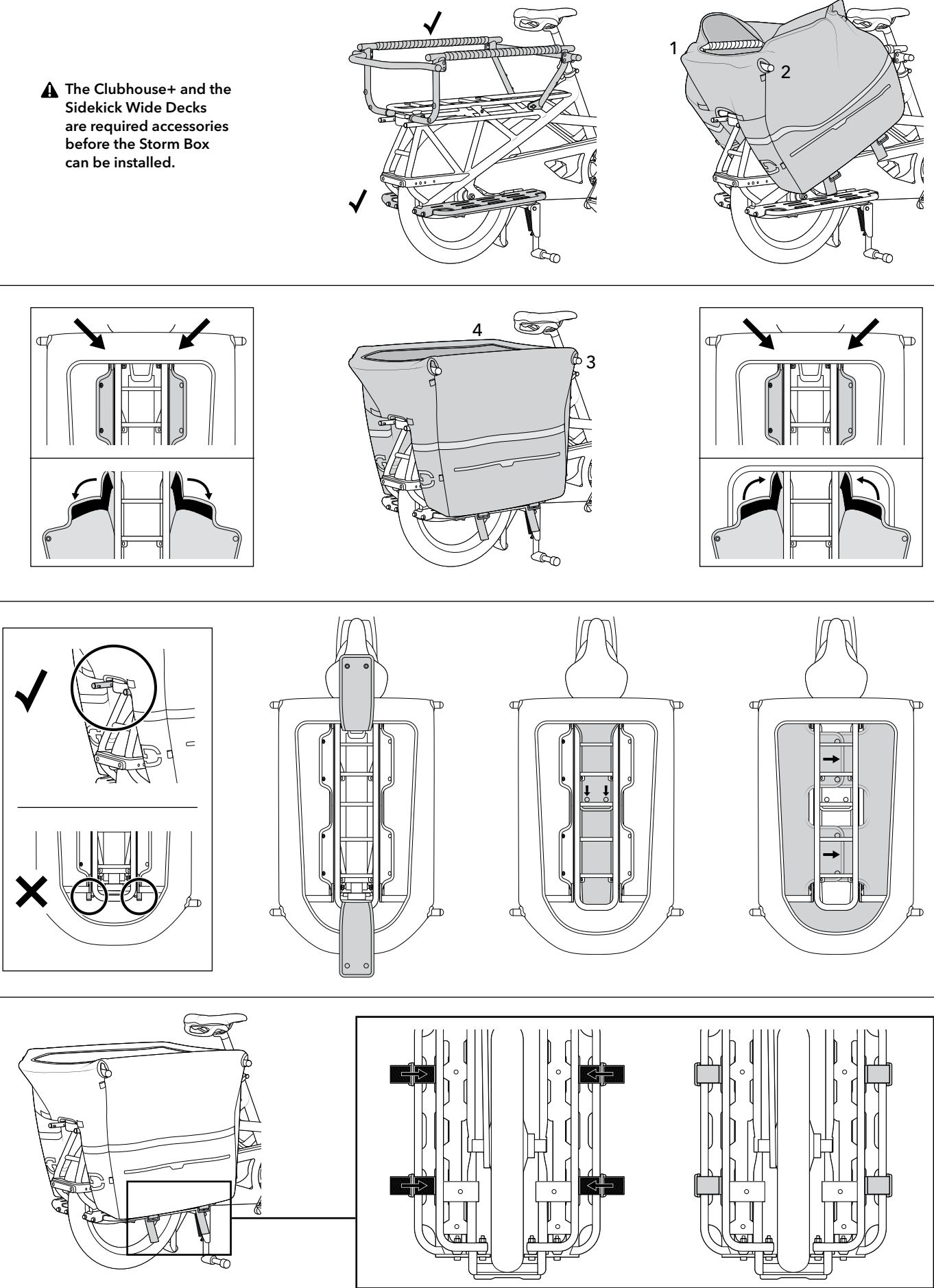
- **Bicycle:** Weight of the bike plus batteries
- **Rider(s):** Weight of the cyclist and any passengers
- **Cargo:** Do not exceed 50 kg (110 lbs) per Storm Box



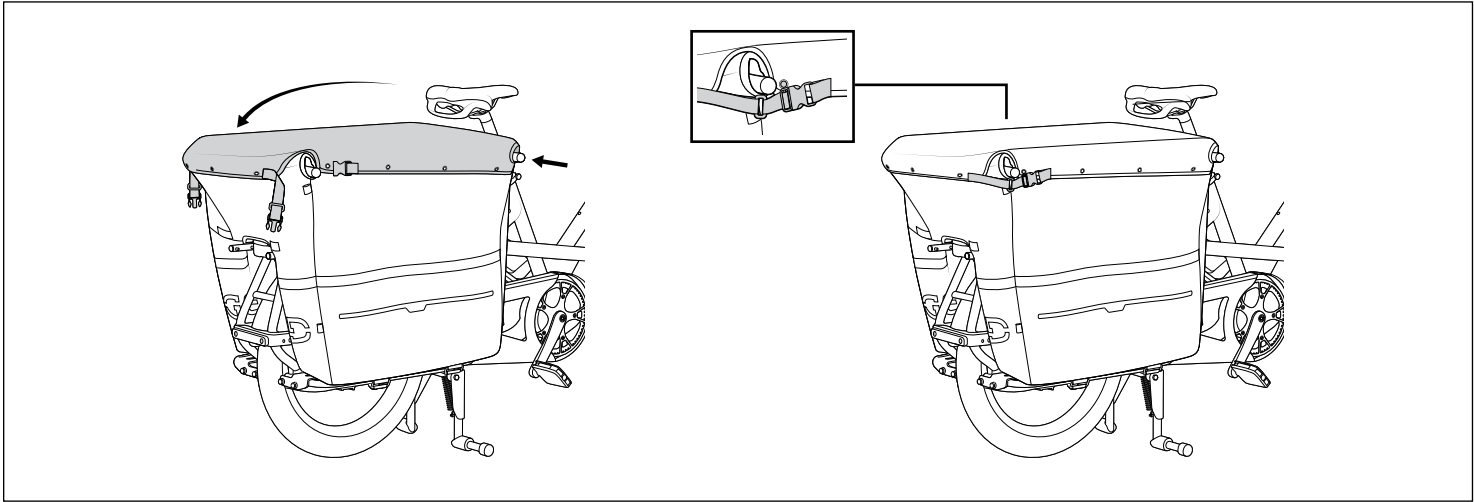
To learn more about carrying cargo and passengers, visit <https://www.ternbicycles.com/support/kb>

How to Install the Storm Box

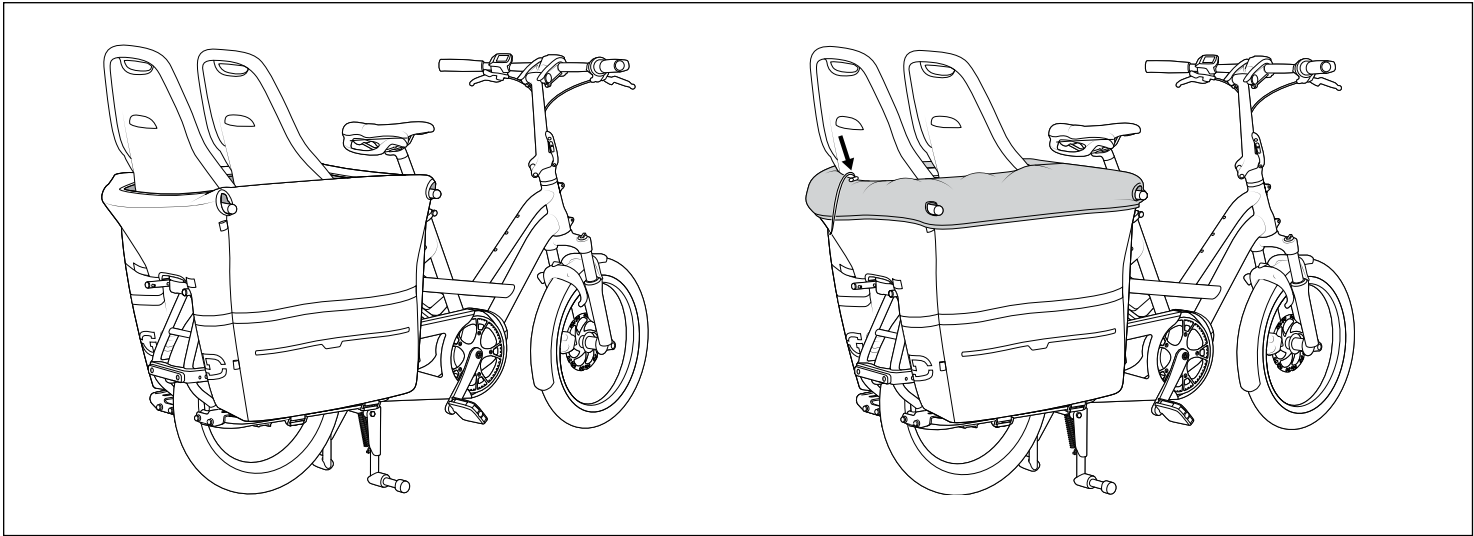
⚠ The Clubhouse+ and the Sidekick Wide Decks are required accessories before the Storm Box can be installed.



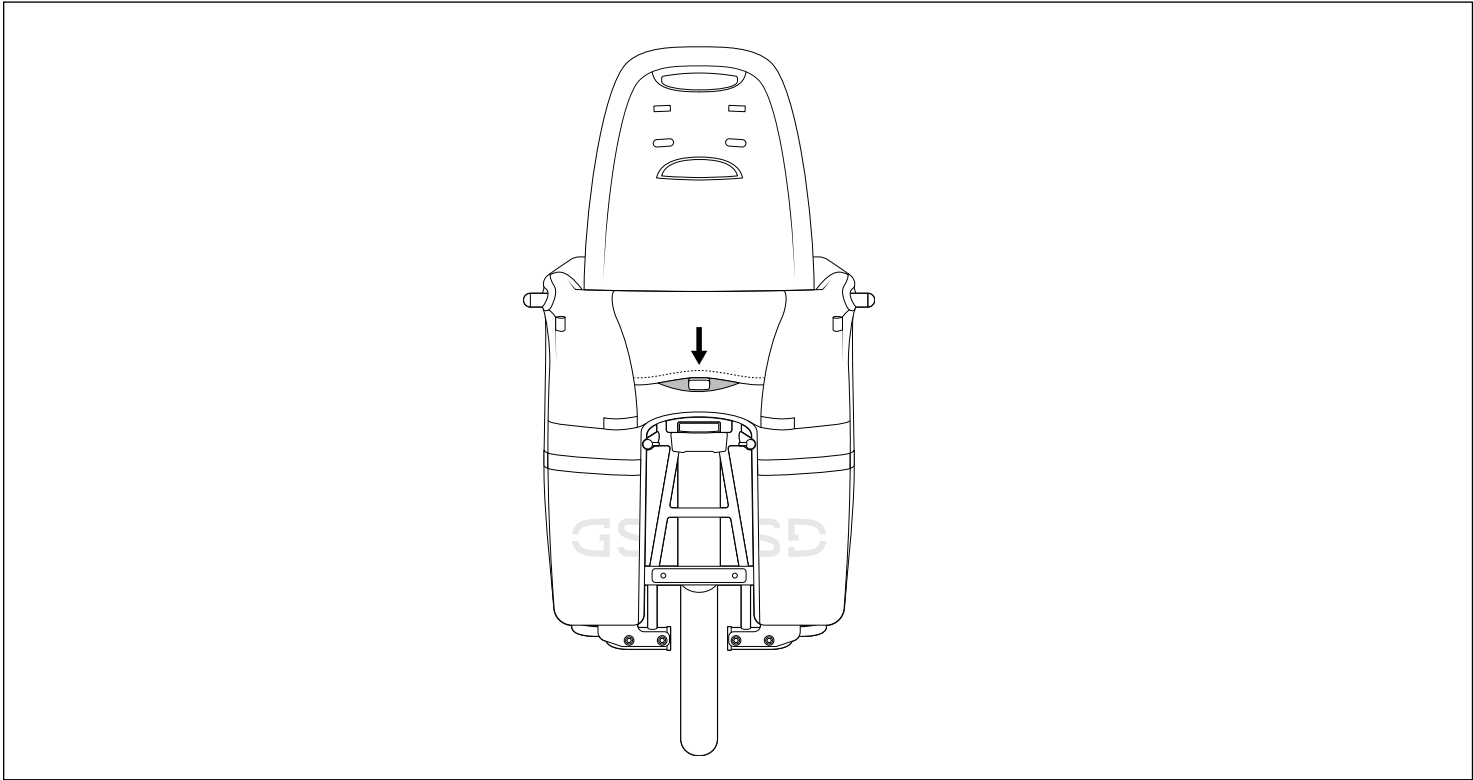
How to Use the Cargo Lid



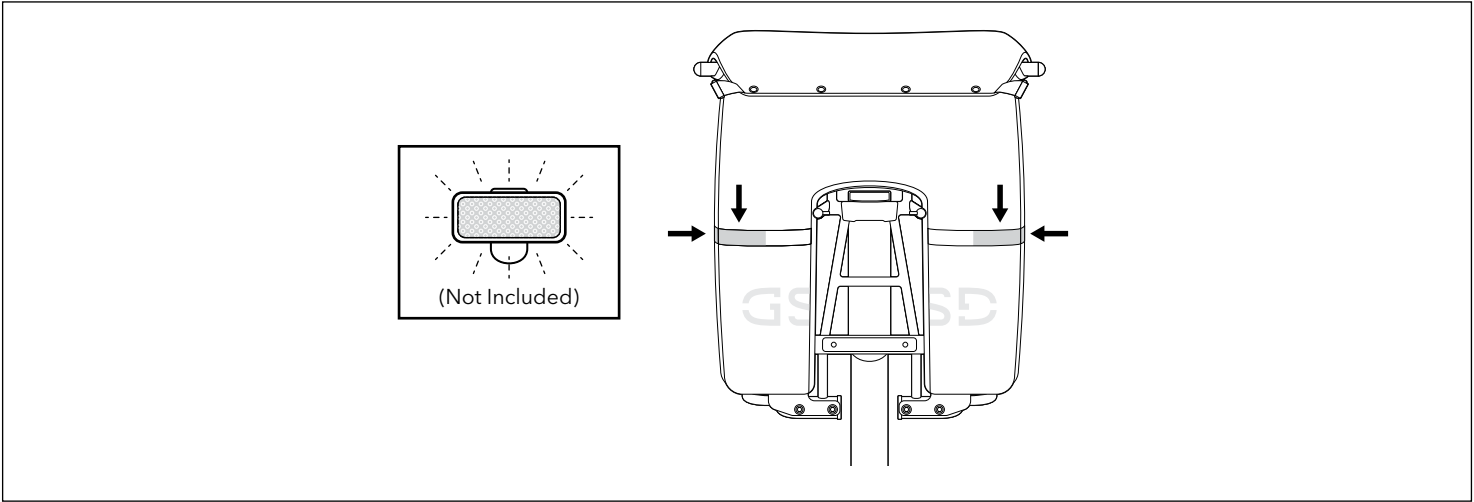
How to Use the Kid Lid



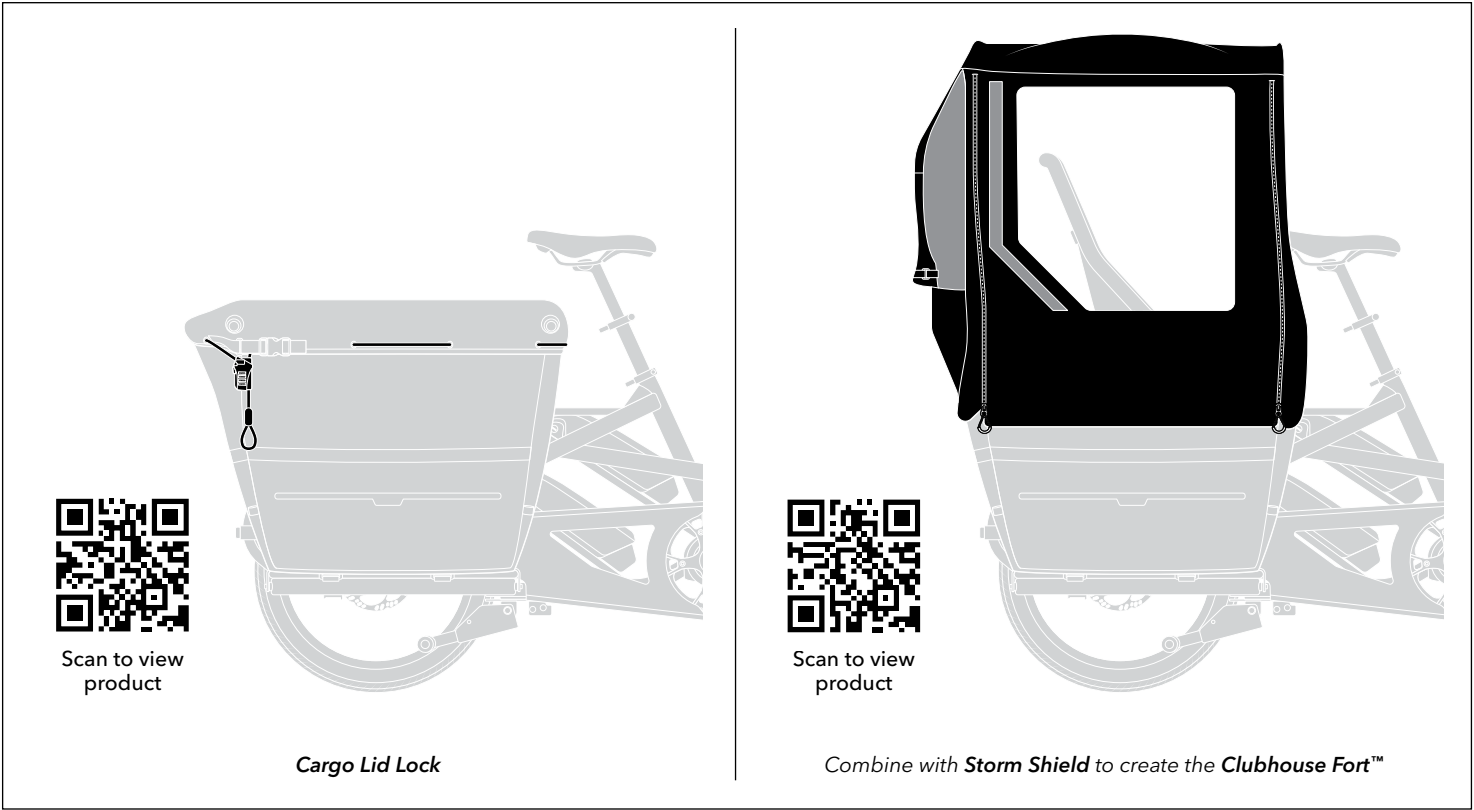
How To Access the Child Seat Adjustment Knob



Where to Add Lights for Extra Safety



Additional Accessories (Sold Separately)



- ⚠ Check to ensure accessories have been correctly installed and securely fastened before riding.
- ⚠ Please take care when rolling the GSD into Vertical Parking Position since Storm Box may come in contact with the ground. Scratching and damage may occur to the box.

LIMITED PRODUCT WARRANTY INFORMATION: This Product comes with a ONE (1) YEAR Limited Warranty from the date of retail purchase by the original end-user. If a material or workmanship defect arises and a valid claim is received within the Warranty Period, this Product will be replaced. Mobility Holdings cannot be held liable for damages to personal property due to misuse or improper care and maintenance. This Product Warranty does not, under any circumstance, cover the replacement or cost of any third party product used with or connected to the Product.

Tern, the Tern Werd (logotype), the Tern Berd (device), GSD, Clubhouse+, Storm Box, Storm Shield, Cargo Lid, Kid Lid, Clubhouse Fort, and Sidekick used alone or in combination are trade names, trade devices or registered trademarks of Mobility Holdings, Ltd.

© 2020 Mobility Holdings, Ltd.

[f](#) [t](#) [i](#) @ternbicycles

ternbicycles.com